

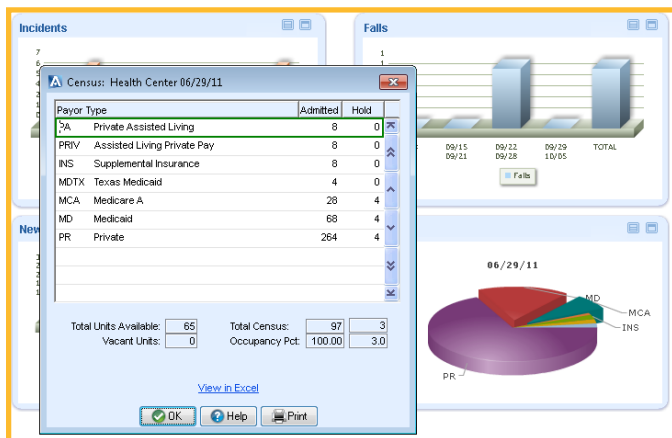
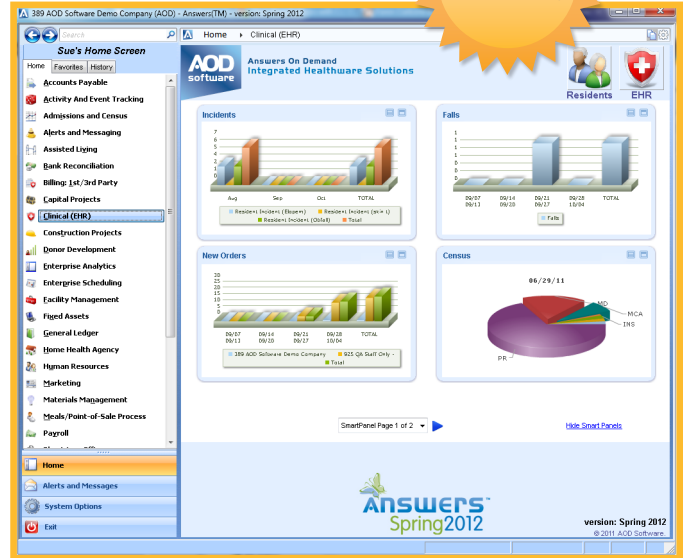


Enterprise Analytics

Visualize your Work!

The Enterprise Analytics module is a new offering for your Answers system. It allows you to create graphs and other visual representations of the data in Answers.

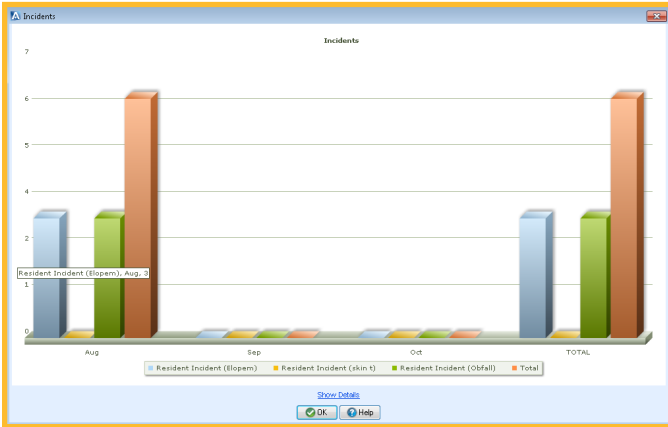
Establish an unlimited number of panels in the system which can all be organized by user in multiple pages on their home screen. This allows everyone to see the information that is most pertinent to their job. Rights are controlled on a per panel basis! The panels can also pull multi-company data and consolidate it for your review.



Need to dig deeper into the data? No problem. You can “drill down” into the SmartPanels for details. Even jump right into a Resident’s chart, medication order or other areas of the system. Hover your mouse over graph elements for a quick look at details.

Create as many panels as you wish with data ranging from Admits, Discharges, Census or from any Alert that you have set up in the Answers system! Examples of some alerts you may already be using which can be visualized in SmartPanels include:

- Falls
- New Orders
- Incidents
- Skin Conditions
- Behavior Modifications
- Blood Glucose
- MDS items including COT assessments
- Pain reports
- Rehab
- Marketing & Donor Waitlist Data
- Additional SmartPanels for many other modules in the Answers system including Financial and Operations will be added!



SmartPanel setup also includes various graphing types including Columnar graphs in both 2D and 3D, Line graphs, bar graphs and pie charts. In the setup, you can also adjust the time periods of data you wish to show, giving you ultimate control over what you see.

Your team can also export the data from the graphs into Microsoft Excel format, giving them even more control to slice and dice data as needed.

INTRODUCTORY OFFER: For a limited time only, the Enterprise Analytics module is being offered at an introductory price. This price will only be available through March 2012 when the module will adjust to its normal pricing. Please contact your Account Manager for more information.

Learn more about Enterprise Analytics by requesting a demo at AODsoftware.com or calling us at 800.311.8252.

